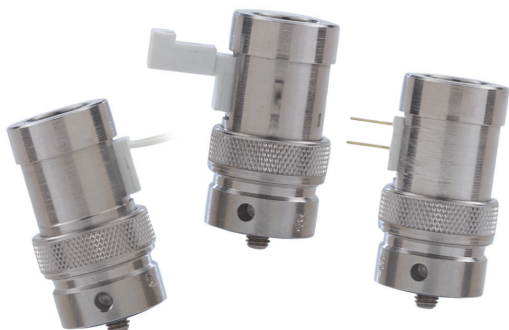
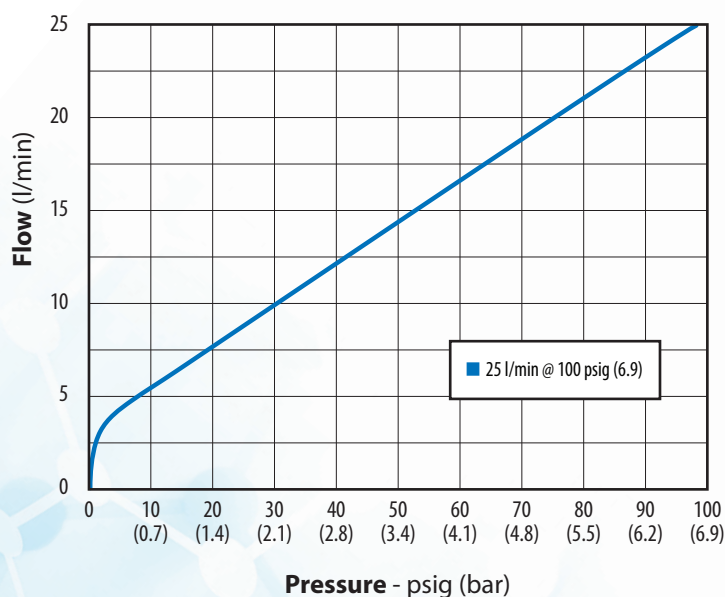


N.O. MANIFOLD EV SERIES



Clippard's normally-open series EV valves are ideal for applications where a manifold mount normally-open valve is required. The normally-open EV valve is a unique valve that offers the same low power and long life as the original EV series in a package that provides normally-open functionality.

TYPICAL FLOW



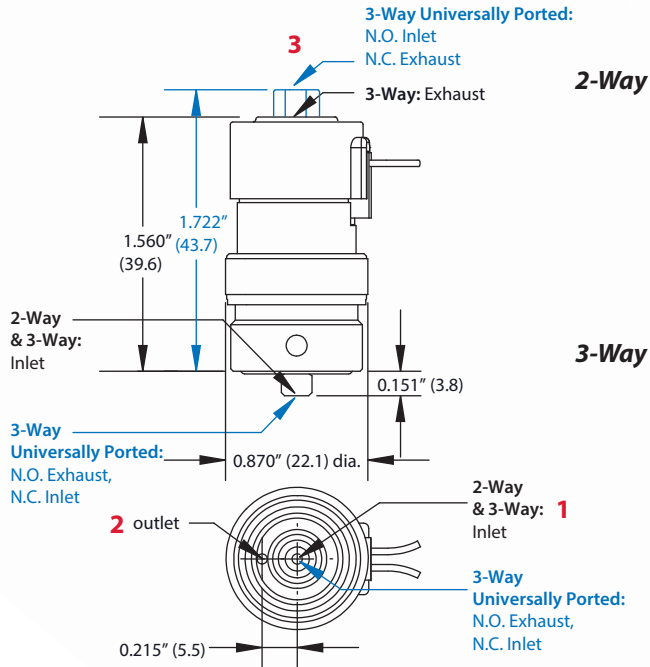
Coil Resistance	218 (12V), 864 (24V)
Connection	Pin connector, spade terminals or radial wire leads
Current	0.055A (12V), 0.028A (24V)
Cycle Life	>1,000,000,000 (<i>ideal applications</i>)
Filtration	40 micron filter (<i>recommended</i>)
Function	2-way normally-open or normally-closed; 3-way normally-open, normally-closed, or universally ported
Material, Body	Nickel-plated brass, ENP carbon steel, nickel iron alloy, 300 series stainless steel
Material, Seals	Nitrile standard; FKM, EPDM ¹ and silicone ¹ available
Material, Spring	Nickel alloy
Material, Wetted	ENP brass, nickel alloy, stainless steel, ENP steel
Max. Flow	25 l/min @ 100 psig (7 bar)
Max. psig	105 (7.2 bar)
Medium	Clean, dry air and compatible gases
Mount	Manifold
Number of Ports	2 or 3
Operating Pressure	100 psig (7 bar)
Operating Range	90 to 150% of rated voltage
Operating Temp. Range	32 to 180°F (0 to 82°C)
Orifice	0.040" (1.02 mm)
Port, Exhaust	#10-32 or M5
Port, Inlet	#10-32 male or M5
Port, Outlet	#10-32 or M5 (in-line)
Response Time	5 to 10 ms (nominal)
Voltage	12 or 24 VDC
Voltage Operating Range	90 to 150%
Wattage	0.67 watts (nominal)
More Details	clippard.com/link/ev-series

¹Minimum order quantity required

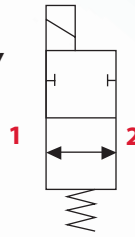
Does your application have requirements beyond what is listed? Contact Clippard to discuss how this valve can be modified to meet your specific needs.

Manifold Mount

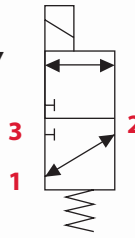
2-Way, 3-Way, and 3-Way Universally Ported



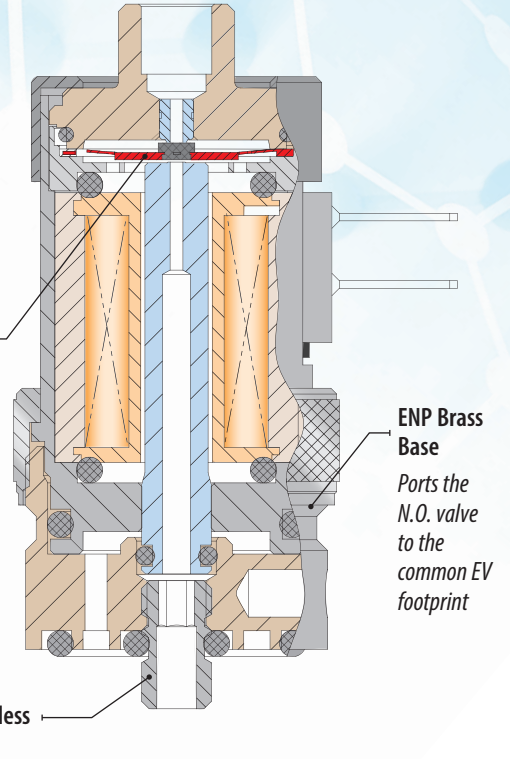
2-Way



3-Way



Spider Located Above the Coil



Dimensions shown are in inches (millimeters listed in parentheses).
Visit clippard.com for more detailed 2D and 3D drawings.

ORDERING INFORMATION

Units	Connection	Function	Voltage	Pressure Range	Seals	Options
(blank) Imperial M- Metric	C Pin Connector T Spade Terminals V Radial Wire Leads	2 2-Way 3 3-Way	12 12 VDC 24 24 VDC	(blank) Vac. to 105 psig - 25 l/min @ 100 psig (7 bar)	(blank) Nitrile V FKM E EPDM ¹ S Silicone ¹	(blank) None -D Diode ² -K Krytox Lube

¹Minimum order quantity required

²Available on pin connector (ECN) models only

Example Part Number:

ECN-2M-12

For more info, scan the
QR code or visit
clippard.com/link/ev-series

